

Labtech Notebook

PC-Based Data Acquisition Software for Windows



SPECIAL OFFER!

on Software/Hardware Bundles!

Save when you buy any Data Acquisition Hardware with any supported Labtech Notebook Software

Buy Labtech Notebook for \$695 and receive a \$100 discount*!

Buy Labtech Notebook Pro for \$1,195 and receive a \$200 discount*!

**Discount may only be applied to the cost of data acquisition hardware purchased at the same time as the software. If the hardware costs less than the discount, the maximum discount is the cost of the hardware.*

SWD-LTN-WIN

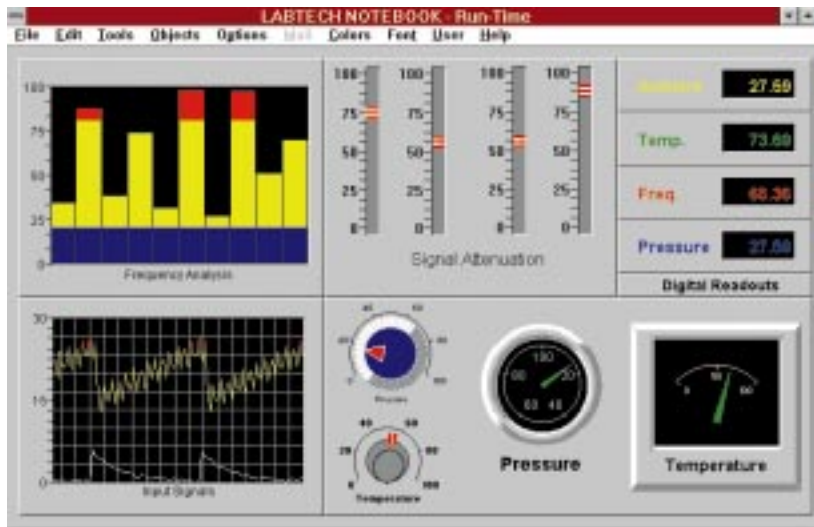
\$695 Basic Unit

- ✓ Easy to Use Icon-Driven Interface; No Programming Required
- ✓ Real Time Data Acquisition, Data Display, Multitasking and Datalogging
- ✓ On-Line Math, Statistical and Logical Calculations Available

Notebook Pro Additional Features

- ✓ IEEE and RS-232 Support
- ✓ High Speed DMA Support
- ✓ Ramp and Soak and Cascade Control
- ✓ Additional Display, Drawing and Animation Capabilities

Labtech Notebook is an integrated software package for data acquisition, process control, monitoring and data analysis. Running on both PC and PS/2 and compatible computers, it will fully complement your data acquisition system, utilizing all its advanced



features while insulating the user from the low-level instructions the acquisition system hardware requires. Collected data may be processed in real-time through an extensive list of mathematical functions, displayed to the screen, and logged to disk in a format directly compatible with most spreadsheet programs.

ICONview is a graphical user interface (GUI) for Labtech Notebook. ICONview lets you create data acquisition and control setups by moving and connecting icons. Users can easily view, configure and manipulate even the largest setups with just a few mouse clicks. Depending on your needs, you can design a setup from within the Labtech menus or use ICONview. ICONview presents all Labtech setup functions (Channels, Windows, Traces and Files) in one place: the ICONview drawing board. From here, users can structure an application graphically, by using the icons as building blocks and connecting them to show the relationships and data flow between Labtech functions. With ICONview, each icon in the setup has its own menu page. An icon's menu page can be modified from within ICONview or through the menu system. You can also design a setup through the menus and then go to ICONview to view the setup and make additional changes.

Notebook's front-end user interface, Realtime Vision, gives you all the tools you need to quickly create a customized display that is ideal for your application.

Trend charts, meters and bar charts display data in real time. Knobs, switches and sliders add real-time control and adjustments. Vision's drawing and animation features give you your display a "true-to-life" depiction of your application.

Notebook Pro

Notebook Pro is an enhanced edition of the standard Notebook. While Labtech Notebook supports only one display screen, Notebook Pro supports up to five different display screens. It also includes support for IEEE-488 and RS-232 communications, a C-icon development kit for creating C-programming icons, and an I/O driver toolkit for writing custom data acquisition drivers. Notebook Pro also includes high speed DMA support, client/server network DDE, ramp and soak and cascade control capability. Notebook Pro also allows users to import bitmaps, have background picture bitmaps, and provides for multiple animations per object.

DataLab and GPIBest Solution

The DataLab and GPIBest solutions are two low cost hardware/software bundles well suited for educational markets or entry level data acquisition. Both packages consist of a slightly limited version of Labtech Notebook which is dedicated to the bundled hardware. DataLab includes the CIO-DAS08JR plug-in board which features 8 12-bit analog inputs with $\pm 5V$ range, 8 digital outputs and 8 digital inputs. The GPIBest bundle includes the CIO-IEEE, IEEE-488 controller card.



IBM PC

IBM PS/2

U.S. AND CANADA

For sales and service, call:
1-800-82-66342SM
1-800-TC-OMEGA

For technical assistance, call:
1-800-327-4333SM
1-800-DAS-IEEE

Specifications

No. of Blocks: 100; 300 for Notebook Pro. *Note:* function blocks refer to input points, output points or calculated values. A system with 24 analog inputs, 4 analog outputs, 16 digital outputs and 20 calculated values would require 24 + 4 + 16 + 20 = 64 blocks.

Screens: 1; 5 for Notebook Pro

Interface: ICONview iconic graphical interface

Data Acquisition: Real-time standard

Analytical Capabilities: On-line calculations for mathematical, statistical and logical functions in real-time

Datalogging: Real-time, in standard formats

Data Collection: Analog input, resistance, digital input, strain gage, thermocouple, counter, thermistor, frequency, RTD, interprocess communication

Trigger: Analog input, calculated values, digital inputs

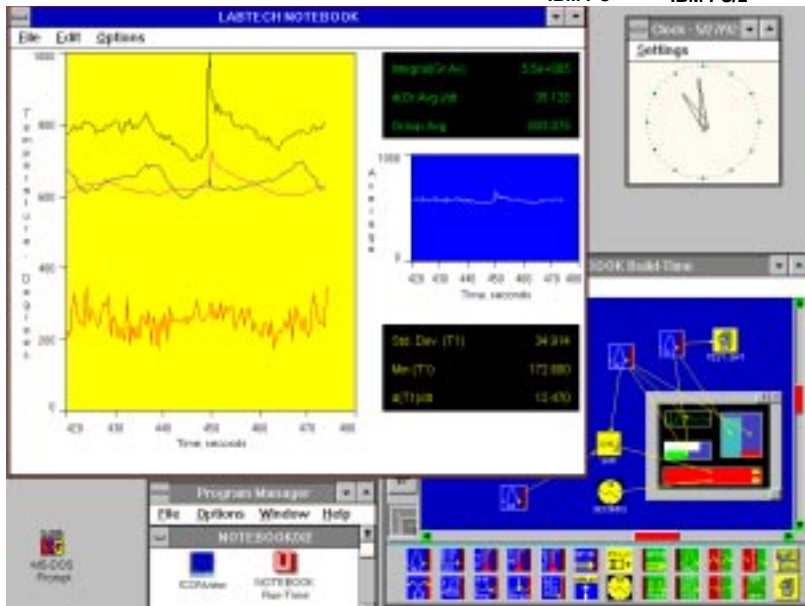
Sampling Rates: Different per channel

Process Control: Open or closed loop

Pretriggering: Standard

Replay Stored or Theoretical Data: Standard

Display Types: Waveform plots, X-Y, Y-t, horizontal and vertical bar graphs, analog and digital panel meters; user-customizable; multiple signals per



display also available with Notebook Pro

Control Objects: Knobs for inputs of variable data, on-off buttons, sliders; user-customizable

Drawing Features: Line segments, arcs, freehand lines, rectangles and squares (filled/unfilled), ovals and circles (filled/unfilled), polygons and freehand shapes; import bitmaps, background picture bitmaps also available for Notebook Pro

Animation: Move, rotate, change color, and shrink/grow objects in response to input data; multiple animations per object also available for Notebook Pro

NOTEBOOK PRO ADDITIONAL FEATURES

High Speed DMA Support: Std. (Notebook Pro only)

Interface Support: GPIB/IEEE, RS-232 devices

Client/Server: Network DDE support

C-Icon Development Kit: Included I/O Driver Toolkit: Included

Control Capabilities: Ramp and soak and cascade control supported

System Requirements: Microsoft Windows 3.1, IBM compatible, 80386 or better CPU, 8 MB memory, VGA graphics or better

Supported Hardware for:

CHROM-AT, CIO-DAS16/16F, CIO-DAS16JR, CIO-DAS16/330, CIO-DAS16/330i, CIO-DAS08-PG, CIO-DAS08, CIO-DAS48, CIO-EXP16, CIO-EXP32, CIO-DAC02, CIO-DAC08, CIO-DAC16, CIO-DDA06, CIO-CTR05, CIO-CTR10, CIO-DIO24/24H, CIO-DIO48, CIO-DIO96, CIO-DIO192, CIO-PDIS08, CTM-05, Daqboard, DAC-02, DAS-1400, DAS-1600, DAS-4, DAS-8, DAS-800, DAS-8PGA, DAS-8PG/AO, DAS-1200, DAS-16/F/G, DAS-20, DAS-TC, DataShuttle (DS Series), DDA-06, EXP-16, EXP-20, OM-1050, OM6, OMD-5508BG, OMD-5508HR, OMD-5508RTD, OMD-5508TC, OMD-5508CL, OMD-5504DA, OMD-5508ACI, OMD-5508ACO, OMD-5616DCI, OMD-5616DCO, OMD-5616CCI, OMD-5632TTL, OMB-Tempbook66, OMB-TEMPSCAN-1000, OMB-DAQBOOK Series, OMB-Multiscan, PIO-12, PIO-24, UCDA8-8PGA, UCDA8-16G, UCPIO-12, WB-AAI, WB-ASC, WB-ASC16, WB-FAI, WB-AVO, WB-DIO-PC, WB-800, WB-802F, WB-815, WB-817, WB-820, WB-850, WB-860, WIN-30 Series,

To Order (Specify Model Number)

Model Number	Price	Description
SWD-LTN-WIN	\$695	Labtech Notebook for Windows 3.x
SWD-LTN-WIN95	695	Labtech Notebook for Windows 95
SWD-LTNPRO-WIN	1195	Labtech Notebook Pro for Windows 3.x
SWD-LTNPRO-WIN95	1195	Labtech Notebook Pro for Windows 95

Hardware/Software Solutions

Model	Price	Description
DATALAB	\$199	Hardware/software bundle. Includes a slightly limited version of Labtech Notebook and CIO-DAS-08JR
GPIBEST	249	Hardware/software bundle. Includes a slightly limited version of Labtech Notebook and CIO-IEEE controller board.
CIO-MINI37	49	Terminal panel for DATALAB board, requires C37FF-2 cable
C37FF-2	25	2-foot cable for CIO-MINI37 terminal panel

Each unit supplied with 3.5" disks and complete operator's manual. Consult Engineering for DOS version. **Ordering Example:** SWD-LTN-WIN Labtech Notebook Software, \$695